

SI.

Swedish Institute

What do we do?

- Swedish Institute is a public agency that promotes Sweden abroad and helps build confidence in Sweden.
- Our task is to create lasting partnerships in core areas.



Photo: Folio

Cooperation in the Baltic Sea region

Our goal is to develop cooperation in the Baltic Sea region.

Our strategies are:

- Financial support and advice
- Leadership programmes for young people
- Scholarship programmes
- Active participation in EU projects



International cooperation

- EU strategy for the Baltic Sea region
- Eastern Partnership





Our core areas:

- Environment and sustainability
- Business
- Society



The types of funding we offer:



Seed funding

Thematic
partnerships

Scholarships

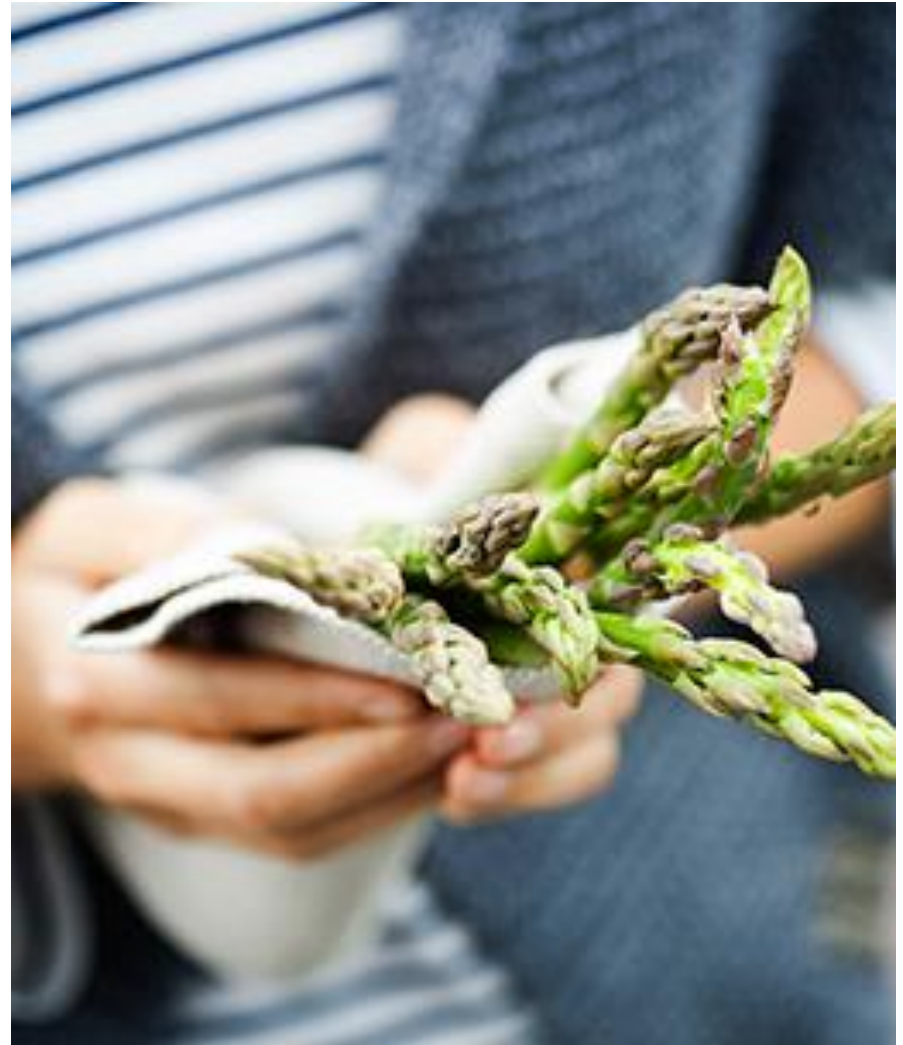
Seed funding criteria:

- Development of long-lasting partnerships
- Connection to policy
- Mutual benefit
- Main applicant is a Swedish organisation
- 1+1+1 partnerships
- Max, 440.000 SEK



Thematic partnership criteria:

- Cross-sectional collaborations
- Action oriented
- Transnational relevance
- Three year projects
- 2 + 1 + 1 partnerships (3 countries)
- Max, 3 000 000 SEK



Baltic Eco Mussel

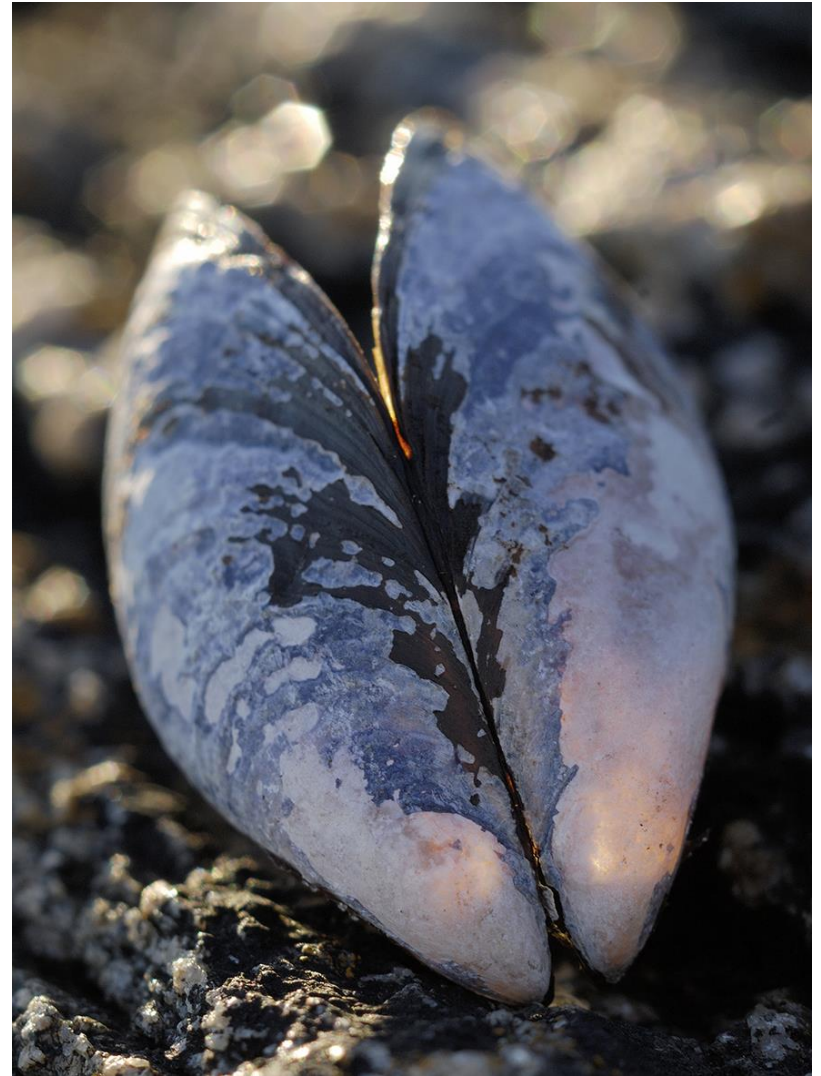
Commercial mussel farming in
the Baltic Sea

Project leader:

East Sweden Energy Agency

Partner countries:

Latvia, Lithuania, Sweden,
Finland



***Closing the Life Cycle of
Landfills- Landfill mining in
the Baltic Sea Region for
the future***

Project leader:

Linnaeus University, Sweden

Partner countries:

Estonia, Latvia, Ukraine, Russia

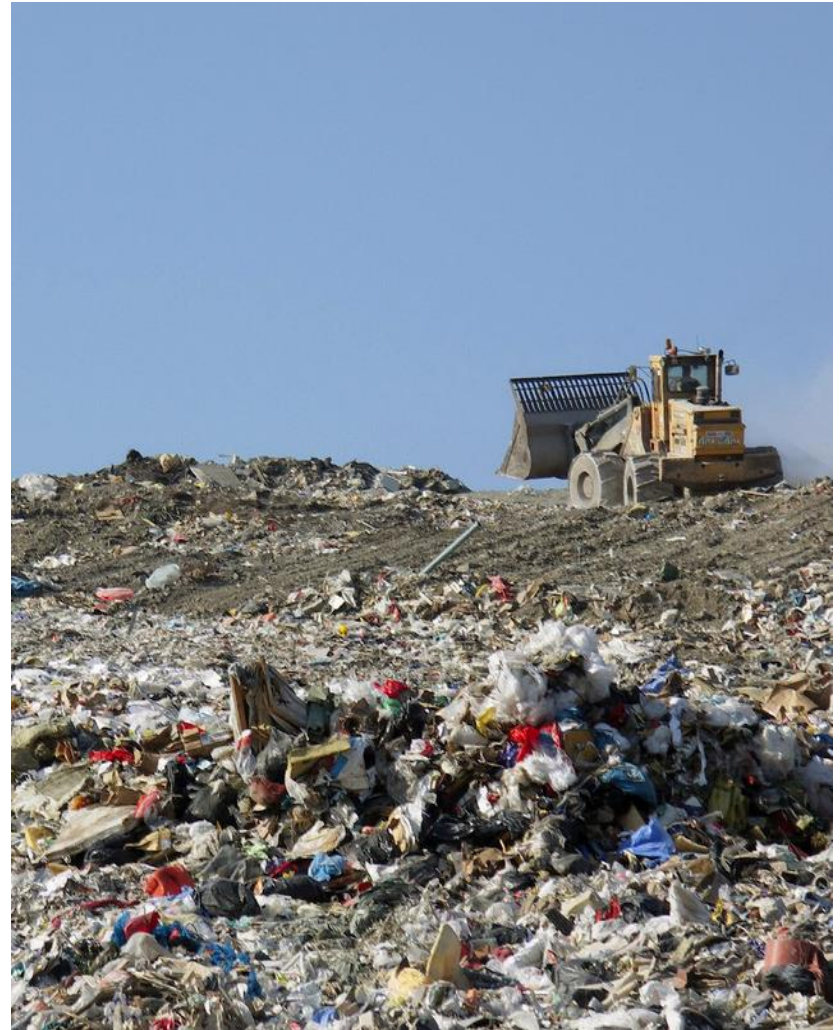


Photo: cc maol

Challenges

- Ownership
- Other financial institutions
- Networking vs concrete outputs
- Focus or size



Many thanks!

Ann Häger
Program manager

+46 702 11 36 08
ann.hager@si.se
Please visit Si.se